

Lecturer, if the student reports feeling unwell during class



DISMISS HIM/HER HOME

When a student reports symptoms specific for the COVID-19* disease dismiss him/her home immediately. Inform him/her of the necessity to contact his/hers PCP (Primary Care Physician) and not to use public transport.

In the event of the student requiring emergency medical assistance, the teacher is obliged to help him/her in contacting relevant emergency medical services.



FILL OUT THE DECLARATION

Fill out the declaration of dismissing student home (sample form available in Extranet).



NOTIFY THE OHS, YEAR'S SUPERVISOR AND DEAN'S OFFICE

Please provide the information on the SARS-CoV-2 test result to the OHS
bhp@gumed.edu.pl
tel. +48 500 668 554,
the year's supervisor and dean's office, specific to the study programme.



CONFIRM TAKING NECESSARY SAFETY MEASURES

Answer the OHS' questions regarding the safety measures taken during class.

*most common symptoms of COVID-19 disease:
cough, fever above 37,5°C, shortness of breath, losing taste or smell

Employee, if you feel unwell while at work



NOTIFY YOUR SUPERVISOR

If you feel symptoms typical of COVID-19* while at work, report it immediately to the head of your unit. He/She will decide whether to dismiss you from work and send you to your current place of residence.



CONTACT YOUR PCP

Contact your primary care physician immediately and follow his guidelines.

*most common symptoms of COVID-19 disease:
cough, fever above 37,5°C, shortness of breath, losing taste or smell

Employee, if you have been diagnosed with COVID-19 or have had a contact* with a person infected with a SARS-CoV-2 virus



NOTIFY THE OHS AND YOUR SUPERVISOR

Notify the OHS**
bhp@gumed.edu.pl
tel. 500 668 554
and your direct supervisor.

FOLLOW THE DSES GUIDELINES ON BEING IN ISOLATION

Read and follow
the guidelines
of the District Sanitary
Epidemiological Station.



www.gov.pl/web/koronawirus/pomorskie2

Please provide the OHS**
and your supervisor
with the information
on your place of isolation
and your contact number.

*in the case where appropriate safety measures, such as covering your nose and mouth and/or keeping safe distance, were not taken

**please remember that the employees of the Occupational Health and Safety and Fire Protection Unit are not medical professionals, do not decide whether or not you should take part in classes, are not an intermediary between you and your class supervisor



Employee, in case of the onset of symptoms which may indicate the SARS-CoV-2* infection



FILL OUT THE DECLARATION

Fill out the declaration
of being in self-isolation
(sample form available in Extranet).



NOTIFY THE OHS AND YOUR SUPERVISOR

Notify the OHS**
bhp@gumed.edu.pl
tel. 500 668 554
and your direct supervisor.



CONTACT YOUR PCP

Contact your
primary care physician
immediately
and follow his guidelines.

*most common symptoms of COVID-19 disease:

cough, fever above 37,5°C, shortness of breath, losing taste or smell

**please remember that the employees of the Occupational Health and Safety and Fire Protection Unit are not medical professionals, do not decide whether or not you should take part in classes, are not an intermediary between you and your class supervisor

What does the Occupational Health and Safety and Fire Protection Unit do as part of preventive measures against the spread COVID-19 at the MUG?



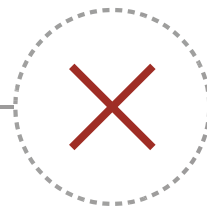
DETERMINING THE 1st DEGREE CONTACTS

The OHS unit determines the list of people with whom the SARS-CoV-2 infected person had direct contact with.



GETS INFORMATION

The OHS unit gathers information and contact data of people infected with SARS-CoV-2 or those currently in quarantine.



IS NOT A DECISION-MAKING BODY, DOES NOT INTERMEDIATE

The OHS employees are not medical professionals, do not decide whether or not you should take part in classes, are not an intermediary between you and your class supervisor.

bhp@gumed.edu.pl
tel. no. +48 500 668 554

Employee, if you are currently in quarantine



NOTIFY THE OHS AND YOUR SUPERVISOR

Notify the OHS*
bhp@gumed.edu.pl
tel. 500 668 554
and your direct supervisor.

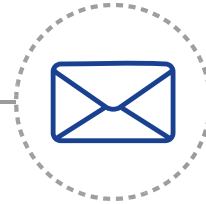


FOLLOW THE DSES GUIDELINES

Read and follow
the guidelines
of the District Sanitary
Epidemiological Station.



www.gov.pl/web/koronawirus/pomorskie2



NOTIFY THE OHS** AND YOUR SUPERVISOR

Please provide the OHS*
and your supervisor
with the information on your place
of isolation and your contact number.

**If one of your
household members
is in quarantine you
are, by law,
automatically
subjected to it as
well.**

**please remember that the employees of the Occupational Health and Safety and Fire Protection Unit are not medical professionals, do not decide whether or not you should take part in classes, are not an intermediary between you and your class supervisor